

MGA Driver Installer User Guide

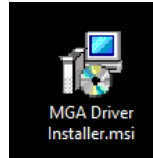
The MGA Driver Installer will install an application on the PC which will perform a silent installation of the MGA USB driver without the need for the MGA device to be connected.

(a) Getting the installer

The installer can be downloaded via the following link: <http://www.addest-student.com/software.php>

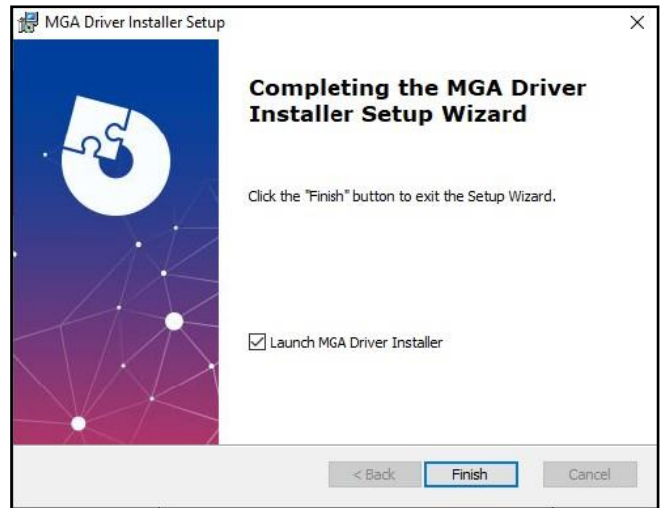
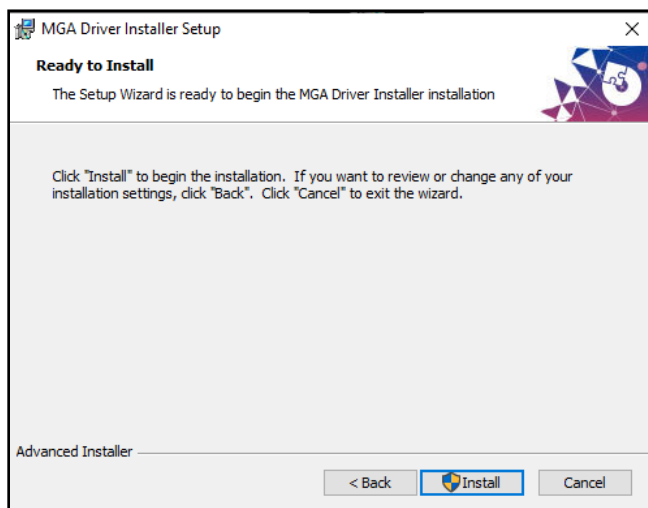
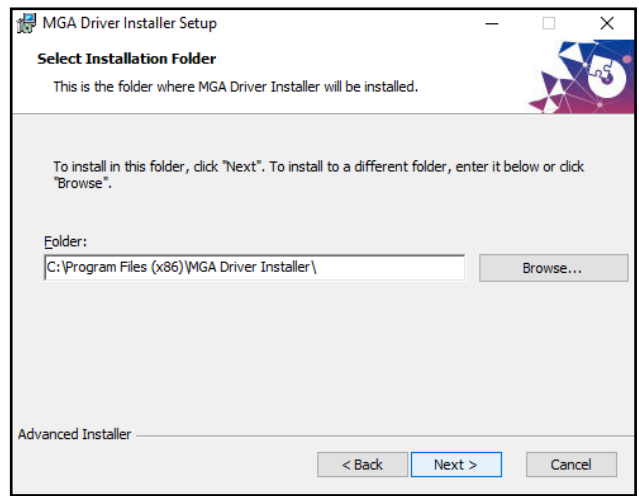
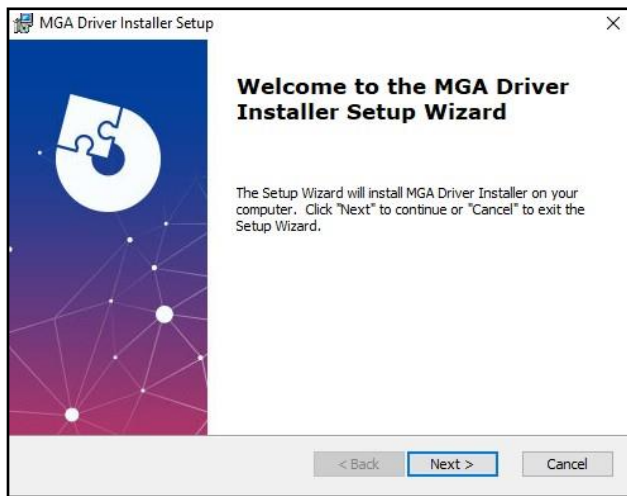
(b) Starting the installation

Double-click on the downloaded file to start the installation.



(c) Follow through the installation process till the installation is completed.

By default, the **Launch MGA Driver Installer** is selected and clicking **Finish** button will start the driver installation application.



- (d) The following dialog will be shown if the drivers are successfully installed.
One can then connect the MGA device to the PC and the MGA PC application will be able to execute with no issue.

